



Path

Upholstery Systems



a modern upholstery system

A classic Orangebox product that has been extended to include concave and convex units. Can be combined with simple table insets that allow the bench units to be linked or used individually. As with Boundary, Path works equally well in small or large areas and it can be reconfigured to meet changing needs.



Path

Upholstery Systems

Standard Product Information

Frame Plywood and hardwood frame with glued and screwed joints.

Foam: Vitafoam Reflex

Legs: Cast Aluminium finished in RAL 9006

Bases: Steel Fabrication finished in RAL 9006

Frames: Tubular Steel finished in RAL 9006

Unless specified; Castors (RAL 9006) are fitted as standard.

Glides as an optional upcharge

NB. Path 01/02 when ordered with any link top comes fitted with glides as standard.

All units except Path 05/06 are fitted with 2 lockable castors at the rear as standard.

Optional Upcharges

Polished Legs

Glides - Satin chrome ABS

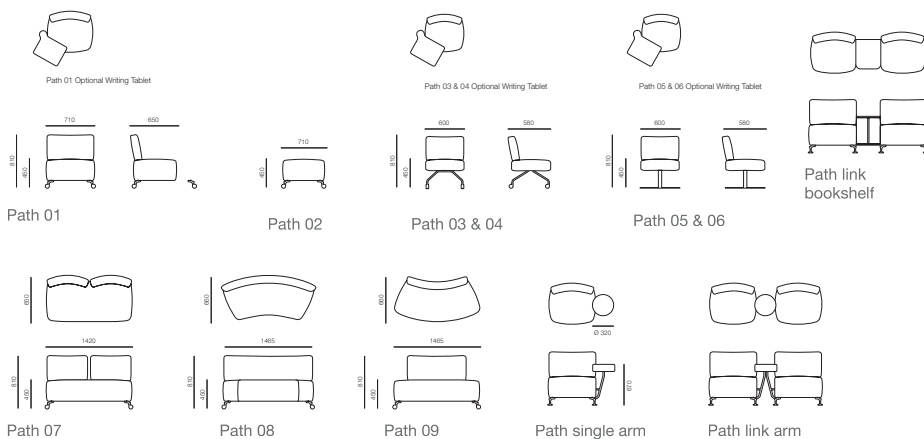
Polished Legs & Chrome Glides

Foot link

Path 03/04 Interactive frame - chrome

Path 05/06 pedestal base - Chrome/brushed satin

Two tone fabric option (except Path 02) - single or double



www.orangebox.com

London Showroom

33-39 Bowling Green Lane

London

EC1R 0BJ

T +44 (0)20 7837 9922

F +44 (0)20 7837 4441